

LEGEND / ABBREVIATIONS

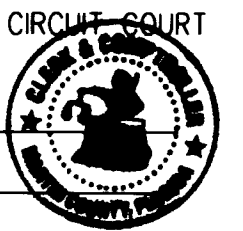
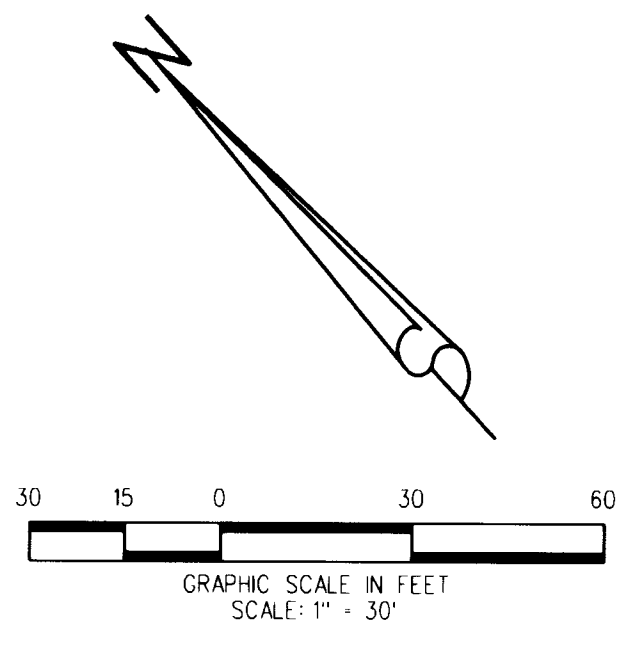
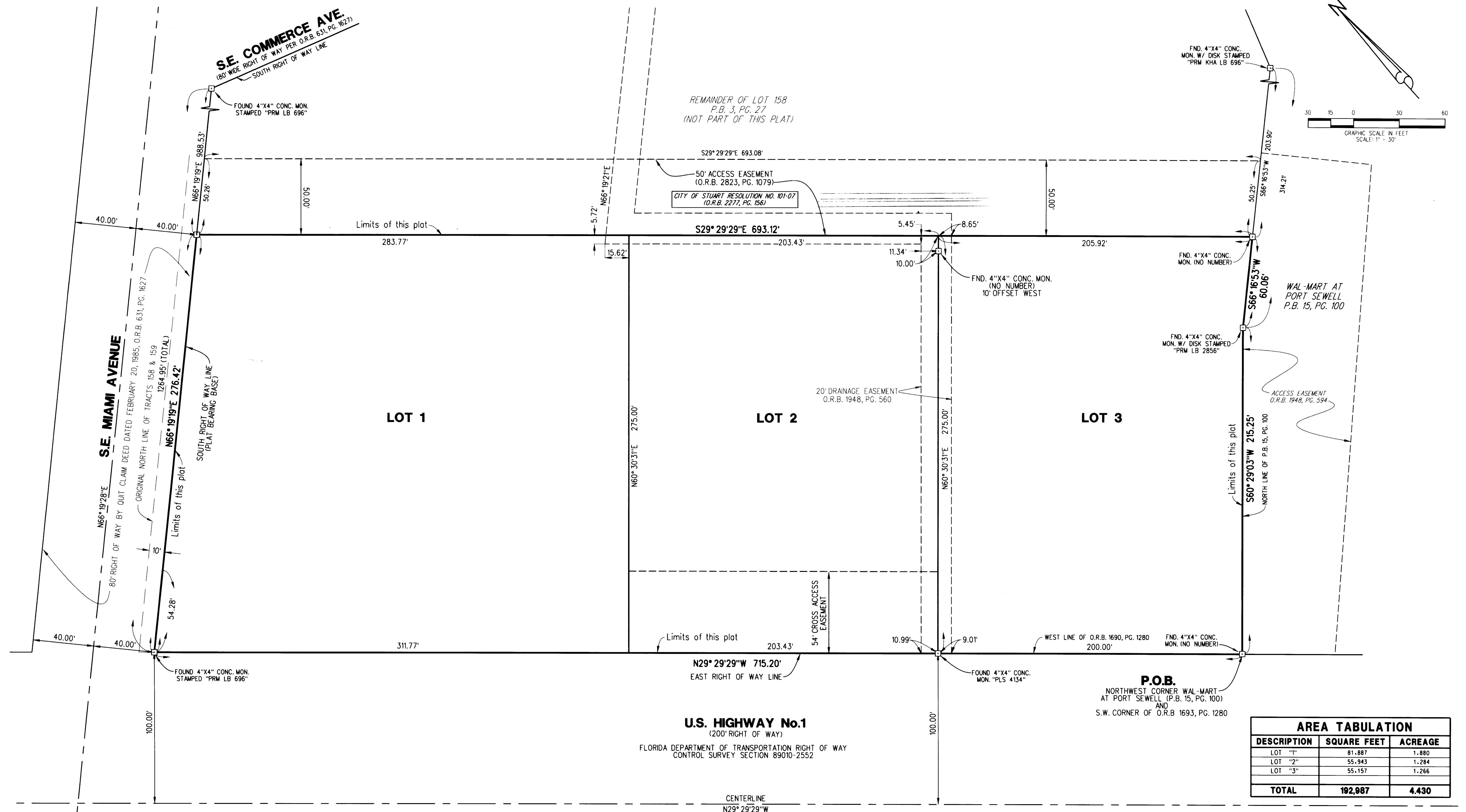
- ◻ = SET 4"x4" CONCRETE MONUMENT & DISK STAMPED "PRM LB 4431" PERMANENT REFERENCE MONUMENT (P.R.M.) UNLESS OTHERWISE NOTED
- CONC. = CONCRETE
- MON. = MONUMENT
- O.R.B. = OFFICIAL RECORD BOOK
- P.B. = PLAT BOOK
- P.O.B. = POINT OF BEGINNING
- P.O.C. = POINT OF COMMENCEMENT
- P.R.M. = PERMANENT REFERENCE MONUMENT
- PG. = PAGE

STUART LANDINGS


BEING A REPLAT OF A PORTION OF LOTS 158 AND 159, PLAT OF PORT SEWELL,
RECORDED IN PLAT BOOK 3, PAGE 7, PUBLIC RECORDS OF MARTIN COUNTY, FLORIDA,
LYING IN HANSON GRANT, CITY OF STUART, MARTIN COUNTY, FLORIDA.

DECEMBER 2015 SHEET 2 OF 2

CLERK'S RECORDING CERTIFICATE
 I, CAROLYN TIMMANN, CLERK OF THE CIRCUIT COURT OF MARTIN COUNTY, FLORIDA, HEREBY CERTIFY THAT THIS PLAT WAS FILED FOR RECORD IN PLAT BOOK 17, PAGE 34, MARTIN COUNTY, FLORIDA, PUBLIC RECORDS THIS 25th DAY OF January, 2015.
 CAROLYN TIMMANN, CLERK OF THE CIRCUIT COURT MARTIN COUNTY, FLORIDA.
 FILE NUMBER 2555303
 BY: *K. Gunkel*
 DEPUTY CLERK

AREA TABULATION		
DESCRIPTION	SQ. FEET	ACREAGE
LOT "1"	81,887	1.880
LOT "2"	55,943	1.284
LOT "3"	55,157	1.266
TOTAL	192,987	4.430



LIDBERG LAND SURVEYING, INC.
 675 West Indiantown Road, Suite 200,
 Jupiter, Florida 33458 TEL. 561-746-8454

CAD: K:\UST \ 383841 \ 03-07 \ 15-014-306 \ 15-014-306.DGN			
REF.	FB.	PG.	JOB
FLD.			15-014-306
OFF.	E.C., & L.J.C.		DATE
CKD.	D.C.L.	SHEET 2 OF 2	DECEMBER 2015
			DWG. D15-014P